

Features

- ★ Small Footprint
- ★ In-Out Isolation Voltage 3000 VDC
- ★ 7 PIN SIP Package
- ★ Temperature Range:-40℃ to +85℃
- ★ UL94V-0 Inflaming retarding package
- ★ MTBF>1million hours(25℃)



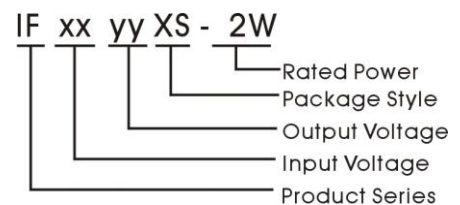
Applications

The IF_XS-2W Series are designed for application where isolated output is required from a distributed power system.

These products apply to where:

- 1) 3000 VDC input and output isolation;
- 2) Input voltage variation $\leq \pm 10\%$;
- 3) Regulated and low ripple noise is not required.

Such as: digital circuits, and IGBT power device driving circuits.



Model Detail List Specification

Model Number	Input Voltage range (nominal voltage)	Output Voltage	Output Current (mA)		Input Current Full load.(mA)		Efficiency	Max. Capacitive Load(μF)
			Min.	Max.	Max.	No.		
IF0505XS-2W	4.75~5.25VDC (5 VDC)	5.0V	40	400	555	40	72%	400
IF0509XS-2W		9.0V	22	222	547		73%	
IF0512XS-2W		12.0V	16	167	541		74%	
IF0515XS-2W		15.0V	13	133	532		75%	
IF1205XS-2W	11.4~12.6VDC (12 VDC)	5.0V	40	400	228	32	73%	
IF1209XS-2W		9.0V	22	222	219		76%	
IF1212XS-2W		12.0V	16	167	216		77%	
IF1215XS-2W		15.0V	13	133	213		78%	
IF2405XS-2W	22.8~25.2VDC (24 VDC)	5.0V	40	400	111	18	75%	
IF2409XS-2W		9.0V	22	222	108		77%	
IF2412XS-2W		12.0V	16	167	107		78%	
IF2415XS-2W		15.0V	13	133	105		79%	

Common Specifications

Item	Test Conditions	Min.	Typ.	Max.	Unit
Isolation Voltage	Tested for 1 minute and leakage current less than 1 mA	3000			VDC
Switching Frequency	Full load, nominal input		100		KHz
MTBF	MIL-HDBK-217F@25℃	1000			K hours
Isolation Resistance	Test at 500VDC	1000			MΩ
Isolation Capacitance			100		pF
Weight			2.5		g

IFXS-2W Series



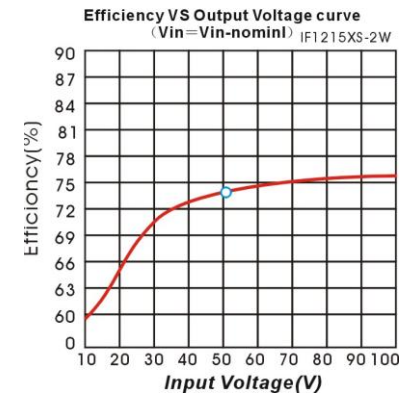
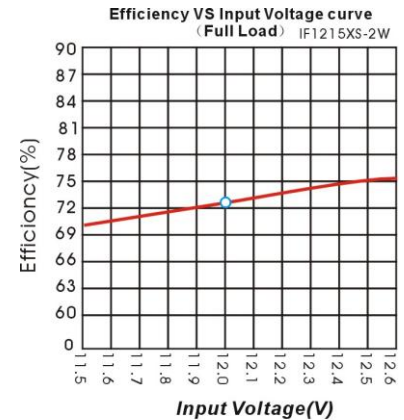
Output Specifications

Item	Test Conditions	Min.	Typ.	Max.	Unit
Output Power		0.2		2	W
Line Voltage Regulation	For Vin change of $\pm 1\%$			± 0.25	%
Load regulation	10% to 100% load		0.01	0.02	
Output voltage accuracy	100% full load		0.01	0.02	
Ripple	20MHz Bandwidth		10		mVp-p
Noise			20		
Temperature Drift	100% full load			± 0.03	%/ $^{\circ}\text{C}$
Input Filter		C Filter			

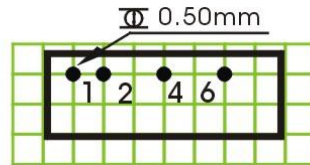
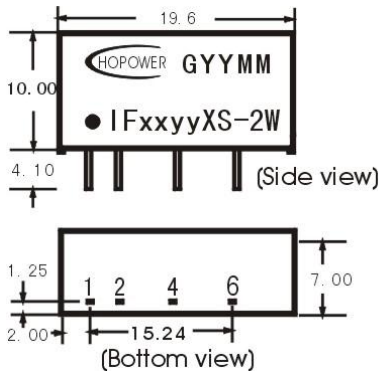
Environmental Specifications

Item	Test Conditions	Min.	Typ.	Max.	Unit
Storage Humidity	Non condensing			95	%
Temp. rise at full load			25	45	°C
Operating Temperature		-45		+85	
Storage Temperature	Power derating (above 85°C)	-55		+125	
Soldering Temperature	1.5mm from case for 10 seconds			300	
Cooling		Free air convection			

Product typical Curve



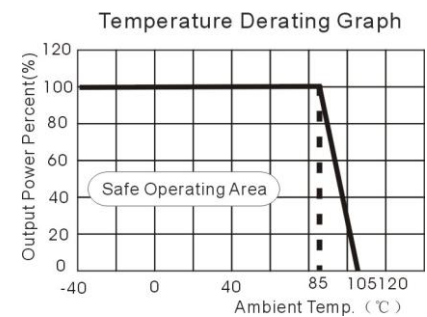
Mechanical Dimensions & Recommended Footprint



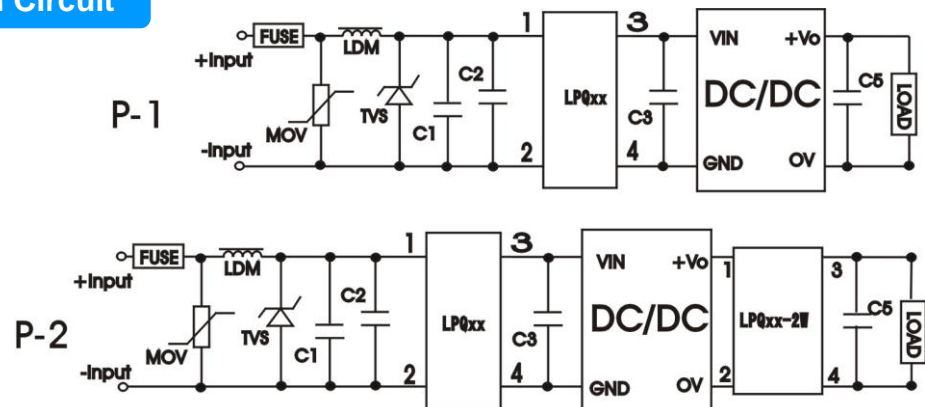
Note: Grid 2.54*2.54mm.
Unit: mm
General tolerances : 0.20mm

Package	Vin	GND	OV	+Vo
IFS	1	2	4	6

Temperature Derating Graph



EMC Module Application Circuit



EMC Recommended Circuit

