

Features

- ★ Continuous Short Circuit Protection
- ★ 7 PIN SIP Package
- ★ In-Out Isolation Voltage 1000 VDC
- ★ MTBF>1million hours(25℃)
- ★ Temperature Range:-40℃ to +85℃
- ★ UL94V-0 Inflaming retarding package

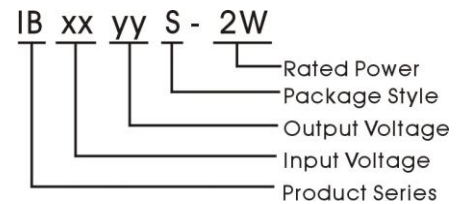


Applications

The IB_S-2W Series are specially designed for applications where a single power supply is highly isolated from the input power supply in a distributed power supply system on a circuit board

These products apply to where:

- 1) 1000 VDC input and output isolation;
- 2) Input voltage variation $\leq \pm 5\%$;
- 3) Regulated and low ripple noise is not required.



Model Detail List Specification

Model Number	Input Voltage range (nominal voltage)	Output Voltage	Output Current (mA)		Input Current Full load (mA)		Efficiency	Max. Capacitive Load(μF)
			Min.	Max.	Max.	No.		
IB0505S-2W	4.75~5.25VDC (5 VDC)	5.0V	40	400	555	40	72%	400
IB0509S-2W		9.0V	22	222	547		73%	
IB0512S-2W		12.0V	17	167	541		74%	
IB0515S-2W		15.0V	13	133	532		75%	
IB1205S-2W	11.4~12.6VDC (12 VDC)	5.0V	40	400	228	34	73%	
IB1209S-2W		9.0V	22	222	219		76%	
IB1212S-2W		12.0V	17	167	216		77%	
IB1215S-2W		15.0V	13	133	213		78%	
IB1505S-2W	14.25~15.75V DC (15 VDC)	5.0V	40	400	180	28	74%	
IB1509S-2W		9.0V	22	222	175		76%	
IB1512S-2W		12.0V	17	167	173		77%	
IB1515S-2W		15.0V	13	133	170		78%	
IB2405S-2W	22.8~25.2VDC (24 VDC)	5.0V	40	400	111	22	75%	
IB2409S-2W		9.0V	22	222	108		77%	
IB2412S-2W		12.0V	17	167	107		78%	
IB2415S-2W		15.0V	13	133	105		79%	

Output Specifications

Item	Test Conditions	Min.	Typ.	Max.	Unit
Output Power		0.2		2	W
Line Voltage Regulation	For Vin change of $\pm 5\%$			± 0.5	
Load regulation	10% to 100% load	5V output	0.01	0.02	%
		12V output	0.01	0.02	
		15V output	0.01	0.02	
		24V output	0.01	0.02	
Ripple	20MHz	Output voltage $\leq 12V$		10	mVp-p
Noise	Bandwidth	others		20	
Temperature Drift	100% full load			± 0.03	$\%/^{\circ}C$
Short Circuit Protection		Continuous, automatic recovery			
Input Filter		C Filter			

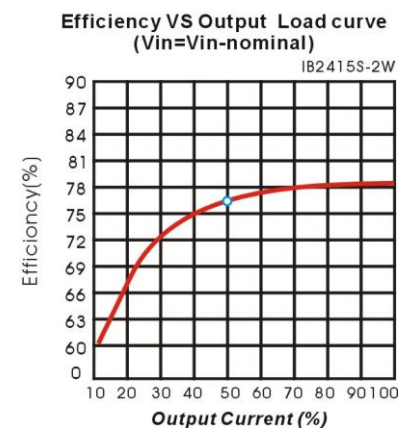
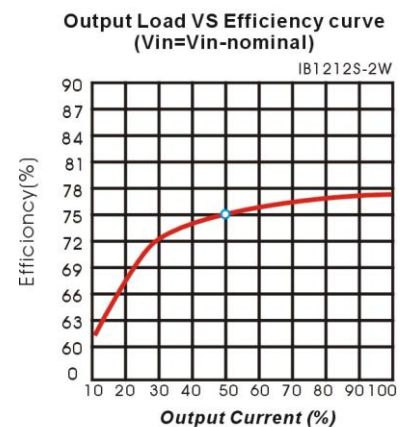
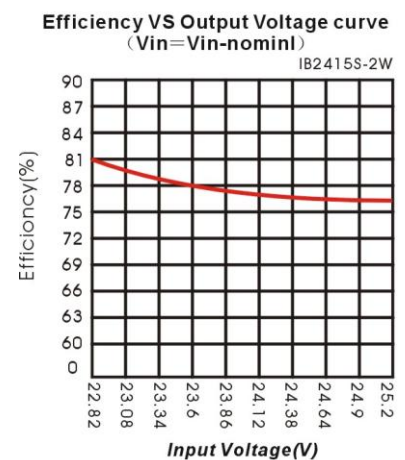
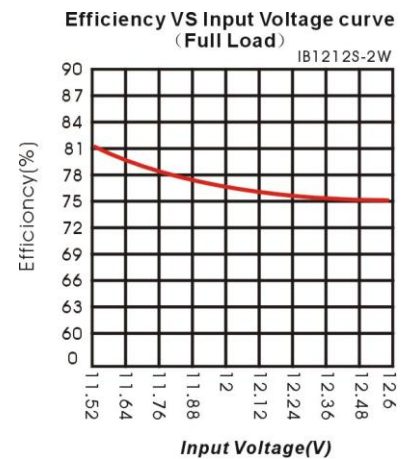
Environmental Specifications

Item	Test Conditions	Min.	Typ.	Max.	Unit
Storage Humidity	Non condensing			95	%
Temp. rise at full load			40	60	°C
Operating Temperature		-45		+85	
Storage Temperature	Power derating (above 85°C)	-55		+125	
Soldering Temperature	1.5mm from case for 10 seconds			300	
Cooling		Free air convection			

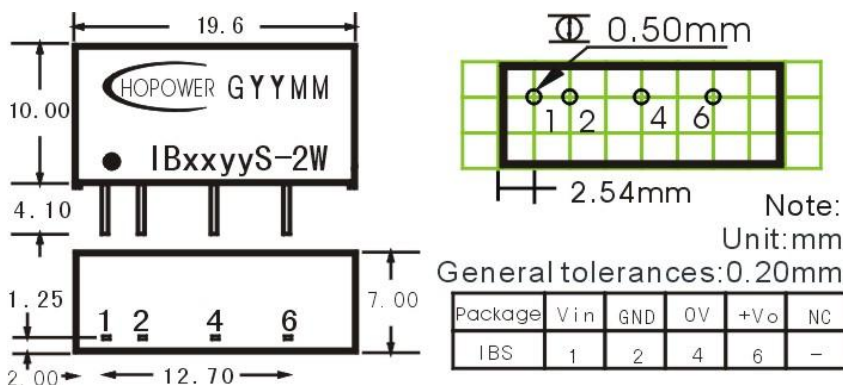
Common Specifications

Item	Test Conditions	Min.	Typ.	Max.	Unit
Isolation Voltage	Tested for 1 minute and leakage current less than 1 mA	1000			VDC
Switching Frequency	Full load, nominal input		100		KHz
MTBF	MIL-HDBK-217F@ $25^{\circ}C$	1000			K hours
Isolation Resistance	Test at 500VDC	1000			M Ω
Isolation Capacitance			300		PF
Weight			2.5		g

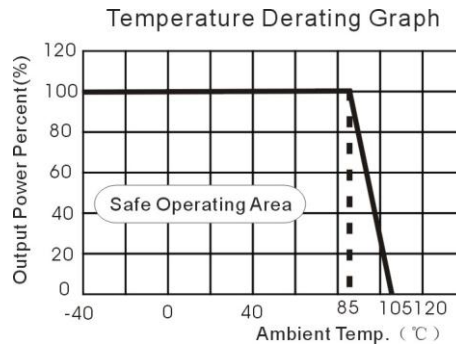
Product typical Curve



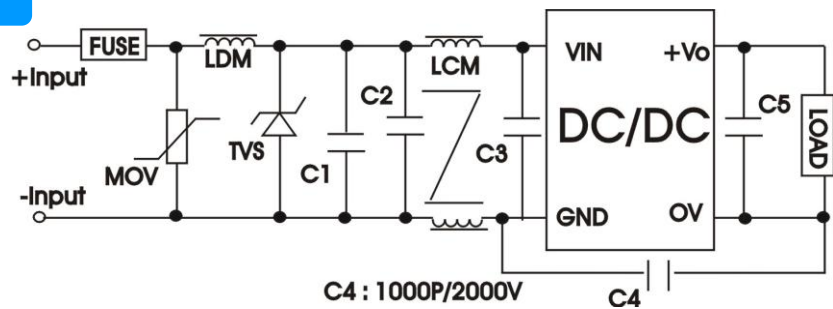
Mechanical Dimensions & Recommended Footprint



Temperature Derating Graph



EMC Recommended Circuit



EMC Module Application Circuit

